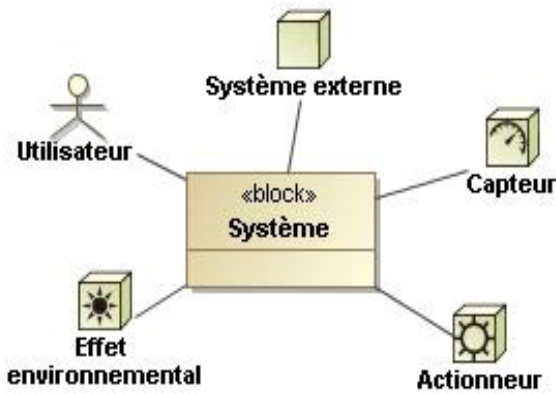
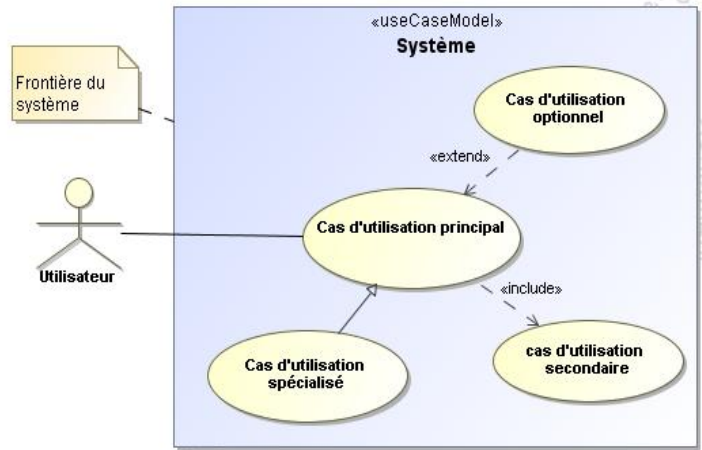


Vue globale du SysML en STI2D

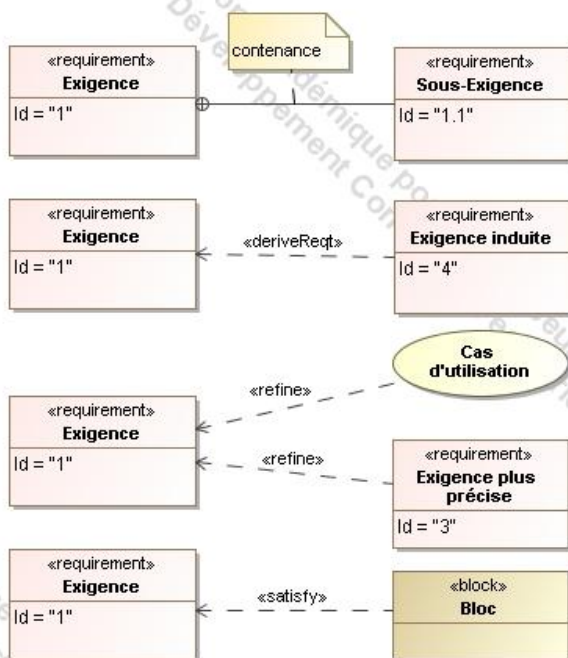
bdd [Modèle] Data [Contexte du système]



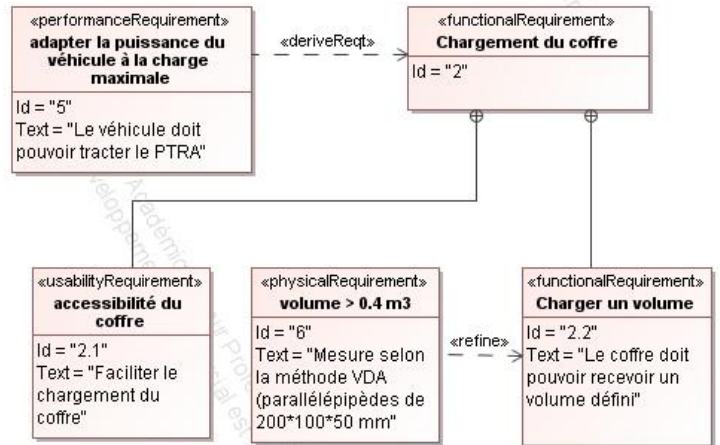
uc [Modèle] Data [types et relations]



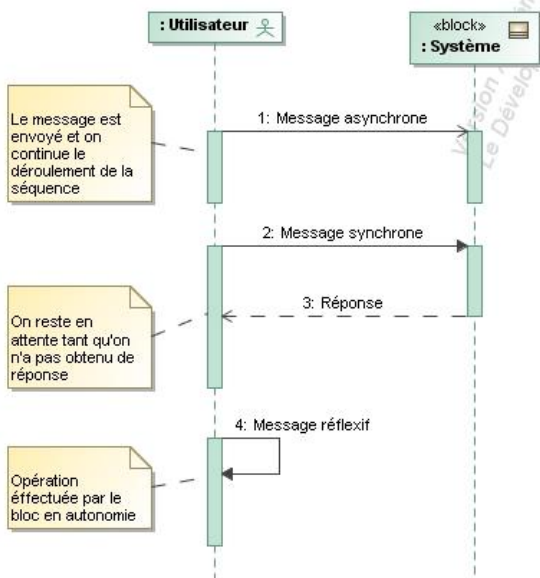
req [Modèle] Data [Exigences et relations]



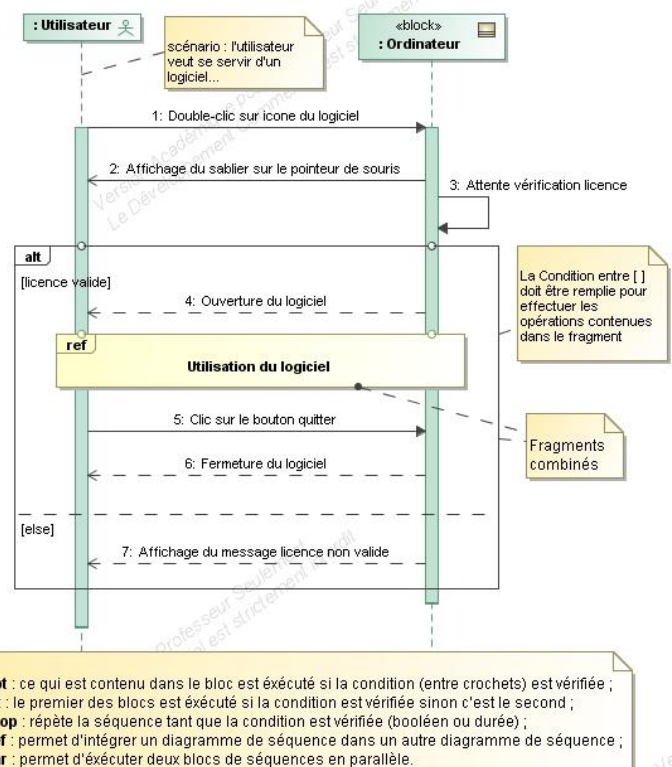
req [Modèle] Data [Relations et typage]



sd [Interaction] Messages [Messages]

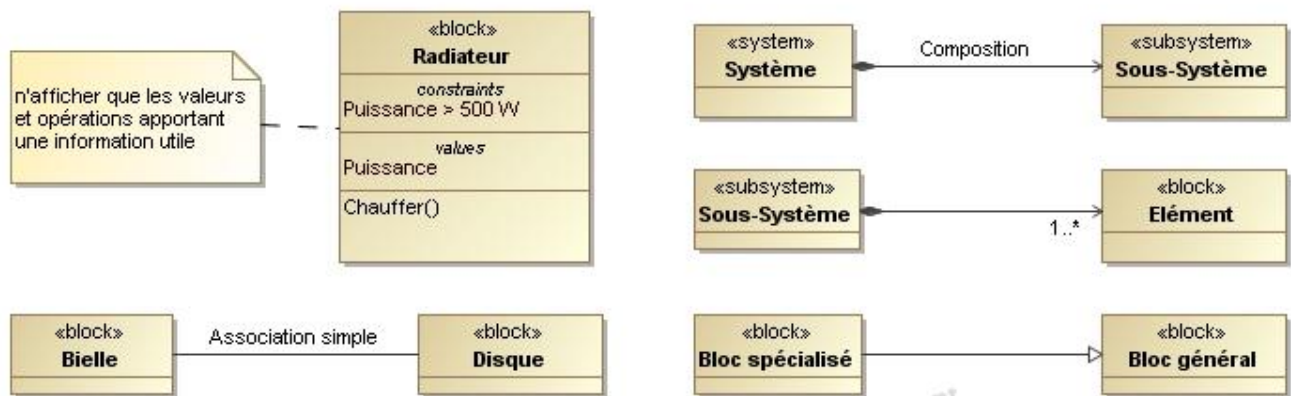


sd [Interaction] Fragments combinés [Fragments combinés]

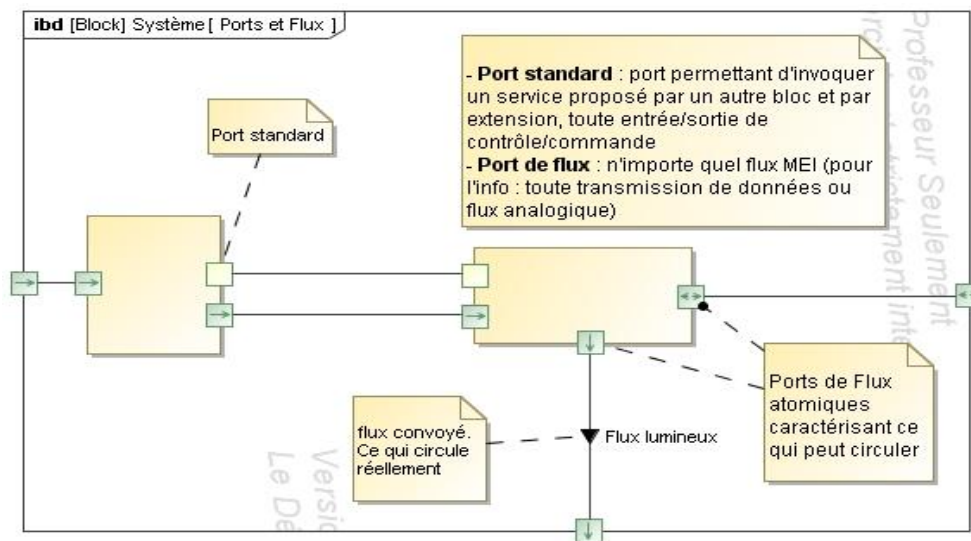


Vue globale du SysML en STI2D

bdd [Modèle] Data [Blocs et relations]



ibd [Block] Système [Ports et Flux]



stm [Machine à Etat] états et transitions [états et transitions]

