

« Vos photographies feront comprendre au monde mon *Balzac* » s'enthousiasme Rodin, en 1908, quand Edward Steichen lui montre la série des *Balzac* nocturnes.

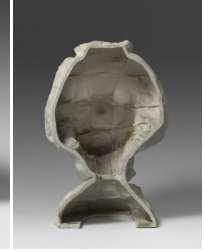
Edward STEICHEN, *The Open Sky*, 11pm, 1908, Tirage au charbon, 25,2 x 22 cm



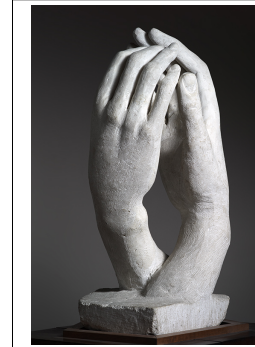
Edward STEICHEN, *Masque d'Hanako*, de la série photo réalisée entre 1911-1913



RODIN Auguste, *Grand masque de Hanako*, 1912
1906 - Hanako Rencontre Auguste Rodin en juillet à Marseille



RODIN Auguste, *La Cathédrale*, 1908



SCULPTURE et PHOTOGRAPHIE
Révéler et Exacerber

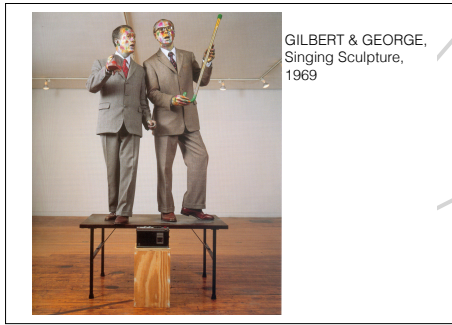
Performance

LA REPRESENTATION DU CORPS, LIEU D'EXPRESSION DES SENTIMENTS

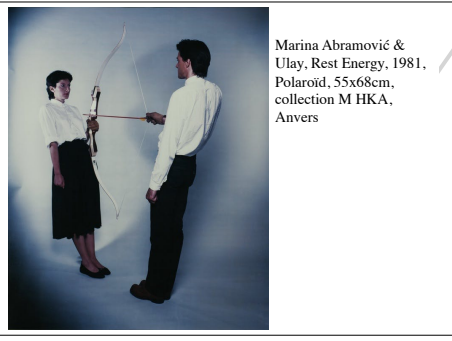
Relation fusionnelle



Ulay et Marina ABRAMOVIC, *Imponderabilia*, 1977



GILBERT & GEORGE, *Singing Sculpture*, 1969



Marina Abramović & Ulay, *Rest Energy*, 1981, Polaroid, 55x68cm, collection M HKA, Anvers

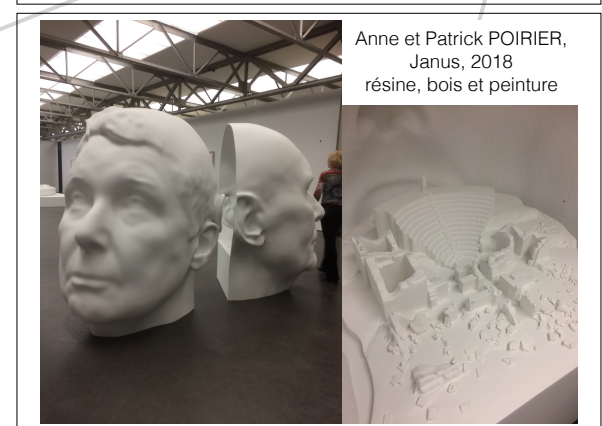
MISE EN SCENE DU CORPS DE L'ARTISTE



Langlands & Bell

Interlocking Chair
1989
Wood, glass, lacquer
92 x 92 x 45 cm

Coexistence and the possibilities of communication and exchange between individuals have been recurring themes in the sculpture of Langlands & Bell since they started working together in 1978. Their furniture works refer overtly to the myriad points where individual experience meets architecture and encapsulate the personal relationships we have with its interior spaces.



Anne et Patrick POIRIER, *Janus*, 2018
résine, bois et peinture